

News



Contact:

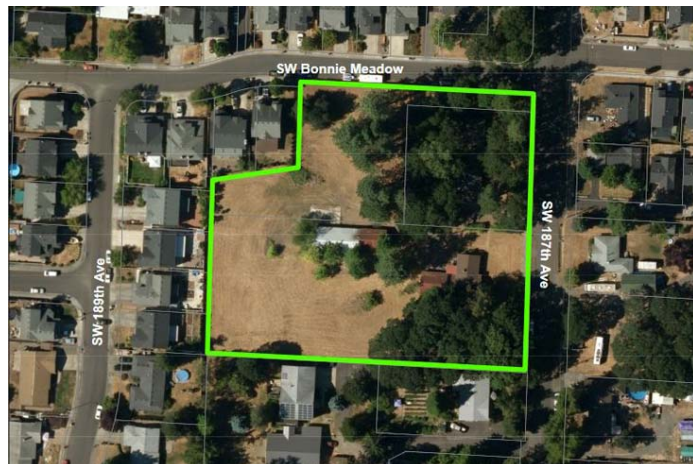
Bob Wayt
503-614-1218 (direct)
503-686-5134 (cell)

October 3, 2017

ALOHA PROPERTY TAPPED FOR PARK DEVELOPMENT; PUBLIC ENGAGEMENT SET TO BEGIN THIS MONTH

The Tualatin Hills Park & Recreation District is asking the public's help in the planning of a new 2.5-acre neighborhood park in Aloha.

The site, located on the southwest corner of SW 187th Avenue and SW Bonnie Meadow Lane, is composed of three tax lots. In 2014 it was purchased by THPRD with 2008 bond measure funds earmarked for land acquisition. Construction of the park is tentatively scheduled for 2020.



This aerial view displays a 2.5-acre future park site in Aloha. Public engagement will begin this month to guide the planning of this property, which is scheduled to be developed in 2020.

For this development,

THPRD will use an expanded public outreach process successfully piloted last year to plan an expanded 7.5-acre park at the existing Crowell Woods Natural Area (west of SW 170th Avenue, north of SW Merlo Road.)

“We believe that expanding our outreach before drafting our master plan is helping us develop parks more considerate of the neighborhood's needs and concerns,” said Gery Keck, superintendent of Design and Development. “We are listening and engaging with neighbors throughout the process of planning, and that's helping us deliver parks with the amenities neighbors want most.”

The first phase of public engagement will include face-to-face communication with immediate park neighbors and others in this diverse, mixed-density residential
Tualatin Hills Park & Recreation District – 15707 SW Walker Rd, Beaverton, OR 97006

neighborhood. The district is recruiting neighbors for these “Community Conversations,” which will be held at Beaver Acres Elementary School at the following dates and times:

- **Tuesday, Oct. 24 (6:30-8 pm)**
- **Thursday, Oct. 26 (6:30-8 pm)**
- **Saturday, Nov. 4 (10:30 am-noon)**

Community members interested in discussing their needs and desires for this new neighborhood park can reserve their seat any of the three Community Conversations by calling John at JLA Public Involvement at 503-235-5881. Participants will receive a \$25 stipend. Light refreshments will be served, and translation services may be made available upon request.

At later stages in the public engagement process, interested residents will be able to complete an online “needs and aspirations” survey, attend one of three design workshops with the park planners and review the draft master plan upon its completion next spring.

A canopy of oak, fir and ponderosa pine trees covers the northern end and southeastern corner of the site; the remainder of the site consists of relatively flat, open field.

Years ago at the site, its former owner, F.N. Mitchell, became a recognized authority in poultry raising. He later manufactured wire gym baskets. Mitchell Wire Products produced and shipped up to 50,000 baskets a year to destinations around the world.

Neighbors and other park advocates who would like to engage with planners about the development of this new park can call 503-629-6305 or visit www.thprd.org/newpark to sign up for project news, see the project timeline, email the project team or register to participate in the community conversations.

About THPRD

Formed in 1955, THPRD is the largest special park district in Oregon, spanning 50 square miles and serving about 240,000 residents in the greater Beaverton area. The district provides year-round recreational opportunities for people of all ages and abilities. Offerings include thousands of widely diverse classes, 95 park sites with active

recreational amenities, nearly 70 miles of trails, eight swim centers, six recreation centers, and about 1,500 acres of natural areas. For more information, visit www.thprd.org or call 503-645-6433.

#